

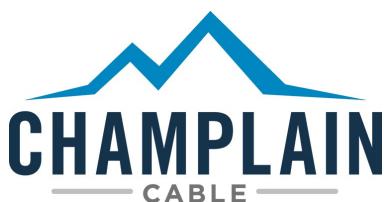
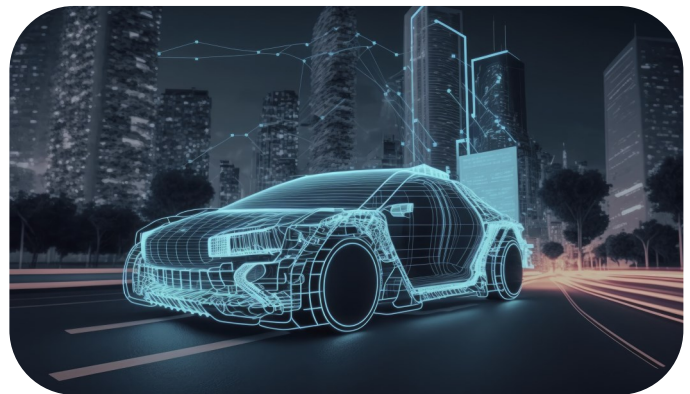


# Automotive Ethernet

## 10 Base-T1 | 100 Base-T1 | 1,000 Base-T1 | 10G Base-T1

Champlain Cable has been producing 100ohm twisted pair Ethernet Cables for over 40 years. We employ state-of-the-art processing and in-line measurement systems to ensure consistent quality. Champlain Cable also participates in SAE, ISO, and OPEN committees to help define the future of these standards.

- EXRAD<sup>®</sup> Material Technology Provides Robust, Long-Term Performance
- Shielded Options Protect Signal from EMI / RFI and Improves Electrical Performance
- 105°C & 125°C Designs for Long-Term Performance .
- Up to 40m lengths for long runs.
- Meets Electrical Requirements at high temperature for 3,000-hour Heat-Aging which Ensures Performance Over Time and at temperature.
- Cross-linked high performance materials ensure sealing and allow for better processing.



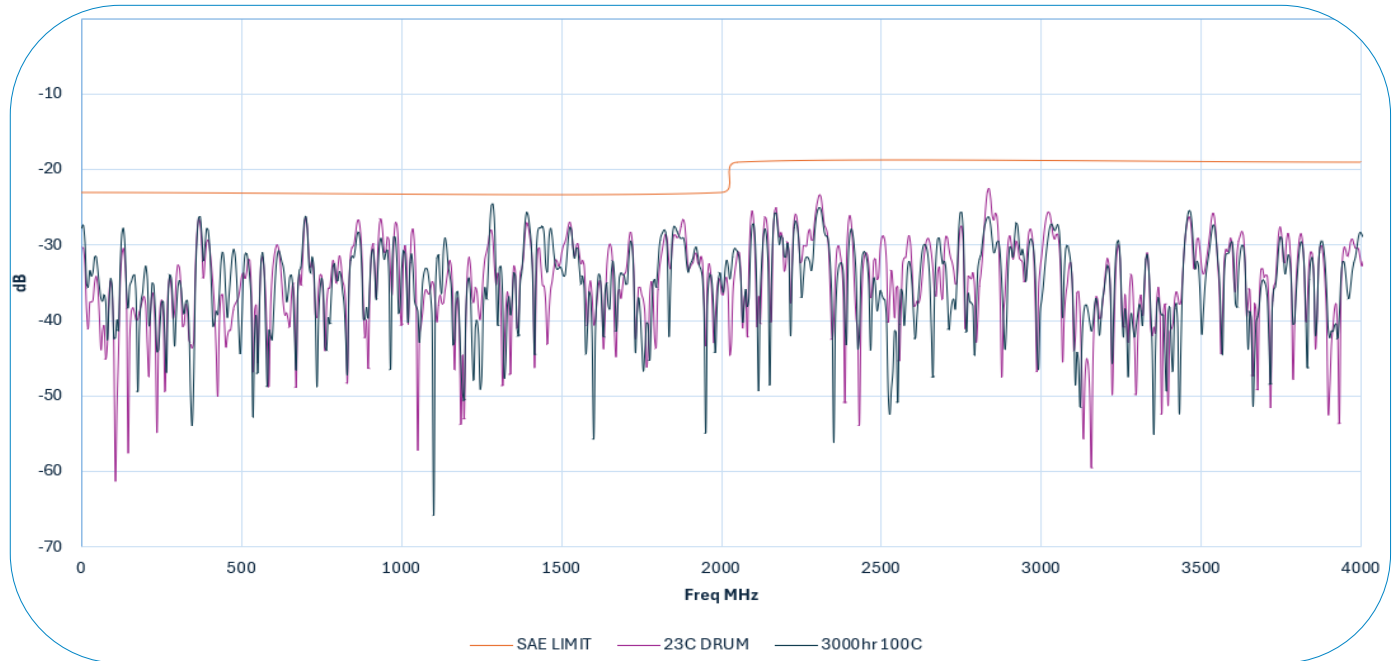


# Automotive Ethernet

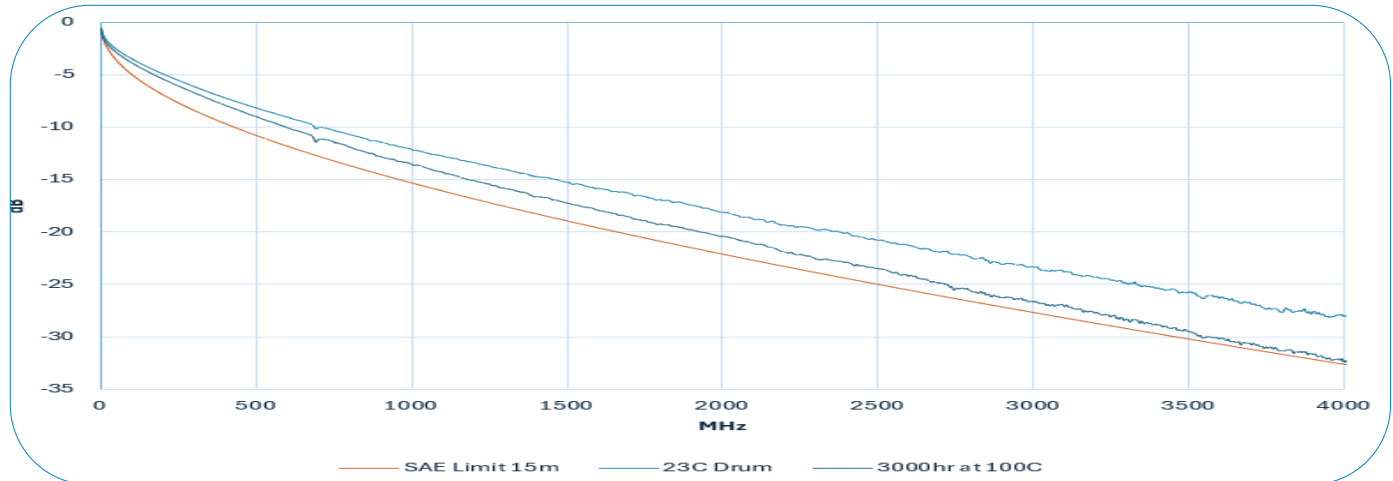
## Limit Line to SAE J3117/3

3000 hour test at 100C for 15 meter length of shielded 0.13mm<sup>2</sup> Ethernet Cable (STP)

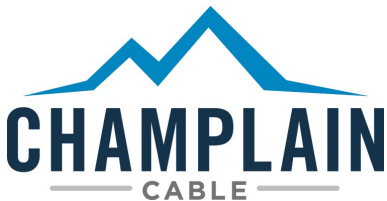
### Champlain Cable 0.13mm<sup>2</sup> JSTP 15m



### Champlain Cable 0.13mm<sup>2</sup> JSTP 15m



We cannot anticipate all conditions under which this information and our products or the products of other manufacturers in combination with our products may be used. We accept no responsibility for results obtained by the application of this information or the safety and suitability of our products alone or in combination with other products. Users are advised to make their own tests to determine the safety and suitability of each such product combination for their own purpose. Unless otherwise agreed in writing, we sell the products without warranty, and buyers and users assume all responsibility and liability for loss and damage arising from the handling and use of our products whether used alone or in combination with other products



**Manufacturing Locations:**  
Colchester, VT. El Paso and Houston TX  
[www.champcable.com](http://www.champcable.com)



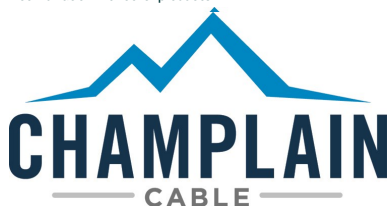
# Automotive Ethernet

10BaseT1					
Size (mm <sup>2</sup> )	Type	Insulated Wire OD nom (in)	Cable OD nom (in)	Temperature °C	Length Max (m)
0.22	JSTP	.048"	.170"	125	25
0.22	UTP	.044"	.125"	125	25
0.35	JSTP	.055"	.185"	125	25
0.35	UTP	.055"	.162"	125	25

100BaseT1					
Size (mm <sup>2</sup> )	Type	Insulated Wire OD nom (in)	Cable OD nom (in)	Temperature °C	Length Max (m)
0.22	JSTP	.048"	.170"	125	15
0.22	UTP	.044"	.125"	125	15
0.35	JSTP	.055"	.185"	125	15
0.35	UTP	.055"	.162"	125	15
0.50	JSTP	.080"	.240"	105	15
0.50	UTP	.065"	.220"	125	15

**Custom designs available, please contact factory**

We cannot anticipate all conditions under which this information and our products or the products of other manufacturers in combination with our products may be used. We accept no responsibility for results obtained by the application of this information or the safety and suitability of our products alone or in combination with other products. Users are advised to make their own tests to determine the safety and suitability of each such product combination for their own purpose. Unless otherwise agreed in writing, we sell the products without warranty, and buyers and users assume all responsibility and liability for loss and damage arising from the handling and use of our products whether used alone or in combination with other products



**Manufacturing Locations:**  
**Colchester, VT. El Paso and Houston TX**  
[www.champcable.com](http://www.champcable.com)

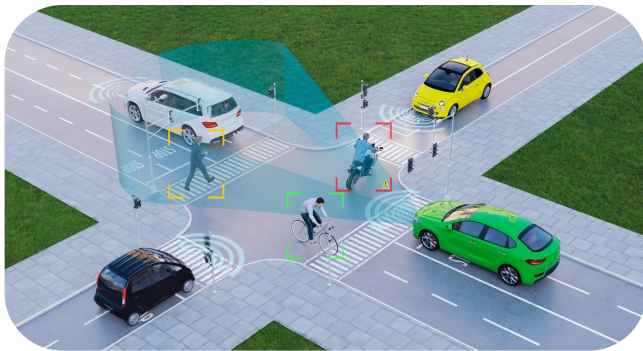


# Automotive Ethernet

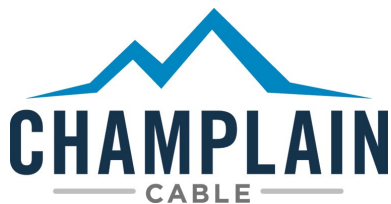
## 1000 BaseT1 Ethernet Products

1000BaseT1					
Size (mm <sup>2</sup> )	Type	Insulated Wire OD nom (in)	Cable OD nom (in)	Temperature °C	Length Max (m)
0.13	JSTP	.039"	.155"	105	10
0.22	JSTP	.048"	.170"	105	15
0.22	JSTP	.048"	.170"	125	15
0.35	JSTP	.055"	.185"	105	15
0.35	JSTP	.055"	.185"	125	15
0.50	JSTP	.080"	.240"	105	15
0.50	JSTP	.080"	.240"	125	15

Custom designs available, please contact factory



We cannot anticipate all conditions under which this information and our products or the products of other manufacturers in combination with our products may be used. We accept no responsibility for results obtained by the application of this information or the safety and suitability of our products alone or in combination with other products. Users are advised to make their own tests to determine the safety and suitability of each such product combination for their own purpose. Unless otherwise agreed in writing, we sell the products without warranty, and buyers and users assume all responsibility and liability for loss and damage arising from the handling and use of our products whether used alone or in combination with other products



**Manufacturing Locations:**  
**Colchester, VT. El Paso and Houston TX**  
[www.champcable.com](http://www.champcable.com)



# Automotive Ethernet

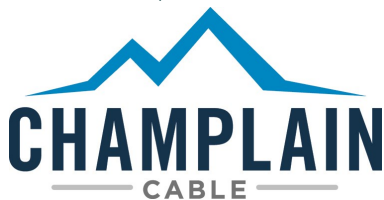
## Multi-Gig Ethernet Products

10GBaseT1					
Size (mm <sup>2</sup> )	Type	Insulated Wire OD nom (in)	Cable OD nom (in)	Temperature °C	Length (m)
0.13	JSTP	.039"	.155"	105	10
0.22	JSTP	.048"	.170"	105	15
0.35	JSTP	.055"	.185"	105	15



400 10/2024 R8

We cannot anticipate all conditions under which this information and our products or the products of other manufacturers in combination with our products may be used. We accept no responsibility for results obtained by the application of this information or the safety and suitability of our products alone or in combination with other products. Users are advised to make their own tests to determine the safety and suitability of each such product combination for their own purpose. Unless otherwise agreed in writing, we sell the products without warranty, and buyers and users assume all responsibility and liability for loss and damage arising from the handling and use of our products whether used alone or in combination with other products



**Manufacturing Locations:**  
Colchester, VT. El Paso and Houston TX  
[www.champcable.com](http://www.champcable.com)